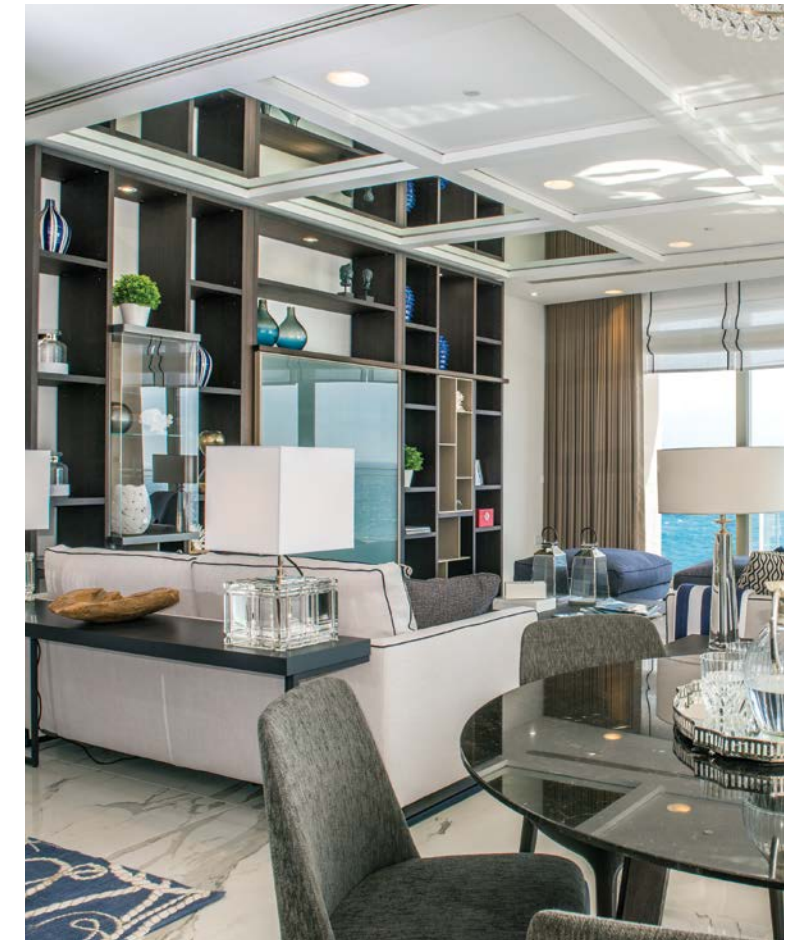


Cruise Control

IN CREATING THE APARTMENTS IN THE NEW Q2 DEVELOPMENT AT TIGNÉ POINT, INTERIOR ARCHITECT MARTIN XUEREB TOOK A NEUTRAL COLOUR PALETTE AND ENRICHED IT WITH A SUBTLE NAUTICAL THEME TO CREATE AN ELEGANT AND QUIETLY LUXURIOUS INTERIOR

Interior design: Martin Xuereb & Associates
Photographer: Kurt Arrigo
Words: Rachel Loos

Reading corner: the grey-blue of the Pianca armchairs reflects the colour of the ocean beyond. The chrome coffee tables add metallic sheen which picks up the light that streams through the windows.



Having wowed everyone with his elegantly chic interiors for Tigné Point's Q1 development, it was hardly surprising that Martin Xuereb and his team (MXA) were chosen to create the interior design for Q2, the second stage of development of 60 luxury waterfront homes.

The challenge, once again, was crafting an interior which was inspiring but at the same time not restrictive, allowing buyers to imagine themselves living in the apartment with their own belongings. The solution was to work with a colour palette of rich neutrals and a variety of materials and finishes to add design interest and a mood of understated luxury that, along with the mesmerising sea views, evokes the sense of being on a luxury cruise liner. 'Achieving this meant doing away with any extremes and avoiding both the ultra-modern and the overly traditional,' explains Martin. 'It meant focusing on warm contemporary elements and embellishing

them to suit our designs.'

The overall theme, continues Martin, is contemporary nautical chic. 'Surrounded by outstanding open sea views with large scale apertures which allowed light to filter, we tried to maximise this and incorporate it into the interiors by enhancing the marine elements which we intermingled with the surroundings,' he says.

'To achieve this, chrome, mirrors and timber wrap around the ceilings, walls and flooring. Blue and contrasting white hues are predominant in the whole scheme. All this is then enhanced with plush marble large-scale polished gress flooring. Piped trimmings highlight key items such as the curtains and the sofas in the main area. These are in turn flanked by unobtrusive yet chic large glass table lamps and accessories which are subtle and connect with the plush theme of the dramatic ocean-going experience.' ►



Living room: Piped trimmings highlight key items such as the curtains and the sofas in the main area. These are in turn flanked by unobtrusive yet chic large table lamps and accessories which are subtle and connect with the plush theme of the dramatic ocean-going experience. The wall system by Poliform, also from onepercent, gives the living room a chic finishing touch. In a spessart oak wood finish and a Castoro matt lacquer, it also features the Ghost glass cabinet for a smart style contrast. Custom-made in a variety of finishes, it hides the television behind a sliding door.



Kitchen: The kitchen by Varenna/Poliform, available exclusively from onepercent, cleverly conceals the appliances and sink behind multiple pull-out doors in a spessart oak wood finish. The island and Varenna kitchen hood are finished in a beautiful Castoro matt lacquer that contrasts the wood finish of the surrounding kitchen.



The philosophy is evident from the moment you step through the door, a passage of teak-slatted flooring leading you on. In the main open-plan living area marble look tiles (statuario venato) enhance the light. Defining the living room from above is a panelled ceiling, a modern interpretation of a traditional look that adds a different textural feel. It is also partly mirrored to reflect all the interiors and echo the stunning exterior vistas.

Paneling is also used to great effect on the walls in the corridor, cleverly breaking up what would otherwise have been an expanse of plain wall, and giving what is often a dull space its own character and flair. Here, though, it is not hard materials but a wallpaper inspired by traditional architectural detailing that creates the stylish look. In the bedrooms themselves, lightly ►



Corridor: giving the impression of wood, the panelled wall is a clever illusion using wallpaper (Young & Battaglia, from FINO). It conceals the door to two bathrooms and gives this narrow space a sense of design flair. The round mirrors, resembling port-holes, draw the eye down. The teak floor is finished with black epoxy to resemble a marine deck.



Bathroom: a marble-pattern is used to contrast the white of the sanitary ware, accessories adding further texture.

Master bedroom: the star of this room is the beautifully textured Angle bed designed by Rodolfo Dordoni for Flou (available from onepercent), its padded and quilted headboard with side panels giving a real feeling of retreat. Behind it subtly patterned wallpaper (from one two one) adds texture.



Guest bedrooms: as in the master bedroom, wallpaper (from one two one) is used to add an extra design factor to the room. In one (below), upholstered fabric panels by Pianca, along with custom-made mirror panels, give a boutique hotel look to the room.



Accent chair: a comfortable armchair in a bedroom emphasises a sense of relaxation. This is the Mad chair by Marcel Wanders for Poliform (from onepercent).

patterned wallpaper, and in one upholstered panels, add texture for a luxe mood.

Fabric plays an important part in giving the apartment its elegant feel. In the main living space, where the view over Marsamxett harbour, across the water from Valletta, is quite stunning, the windows feature sheer blinds that screen the sun, but still allow a sense of the water to flow through. In all the rooms, curtains in ultra-tactile and rich fabrics give the perfect finishing touch.

In March, a limited release saw more than 80 per cent of the first tranche of apartments sold within three weeks – a testament to the success of this rich and sophisticated interior design. **HW**

